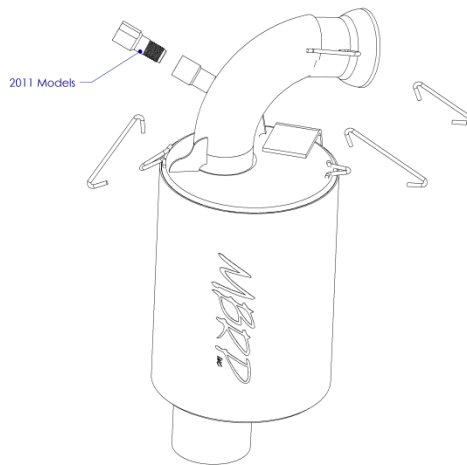




MBRP Muffler Installation Instructions
126T209 2012-2014 Skidoo 800 Etec all Models

1. Remove the springs fastening the stock muffler to the frame and the exhaust pipe.
(Set springs safely aside so they can be reused)
2. Remove the temperature sensor, then remove the stock muffler.
3. Install the MBRP muffler, placing its outlet through the stock exit in the belly pan.
4. Using the stock springs, fasten the MBRP muffler using the tabs on inlet pipe.
5. Using the two remaining stock springs and the provided spring extensions, fasten the MBRP muffler to the body. (Use the springs tabs on the top of the canister.)
Note: 2013-up models require the shorter spring extension on the inlet side of the canister .
6. Reinstall the temperature sensor, 2011 models only will require the adaptor.



NOTE: To avoid exhaust leaks use high heat silicone to seal all connections between expansion chambers and muffler. Monitor for leaks during the first 200 miles after your installation and re-apply silicone where necessary. We suggest having your local snowmobile mechanic or performance shop install this product.

CAUTION: **DO NOT** touch muffler while snowmobile is running or shortly after it has run, as it may result in personal injury.

MBRP Inc warranty applies for a one (1) year period from the date of purchase to defects in product material and workmanship and is to the original purchaser on record and for the original vehicle for which it was designed and installed. This warranty is limited, at MBRP Inc.'s sole determination, to the repair or replacement of defective product only and does not include the cost of removal or re-installation, damage by accident, abuse, misuse or misapplication or any consequential damages however they may arise. Determination of warranty coverage shall be at the discretion of an authorized MBRP Inc quality engineer.